

1 BEDROOM APARTMENT

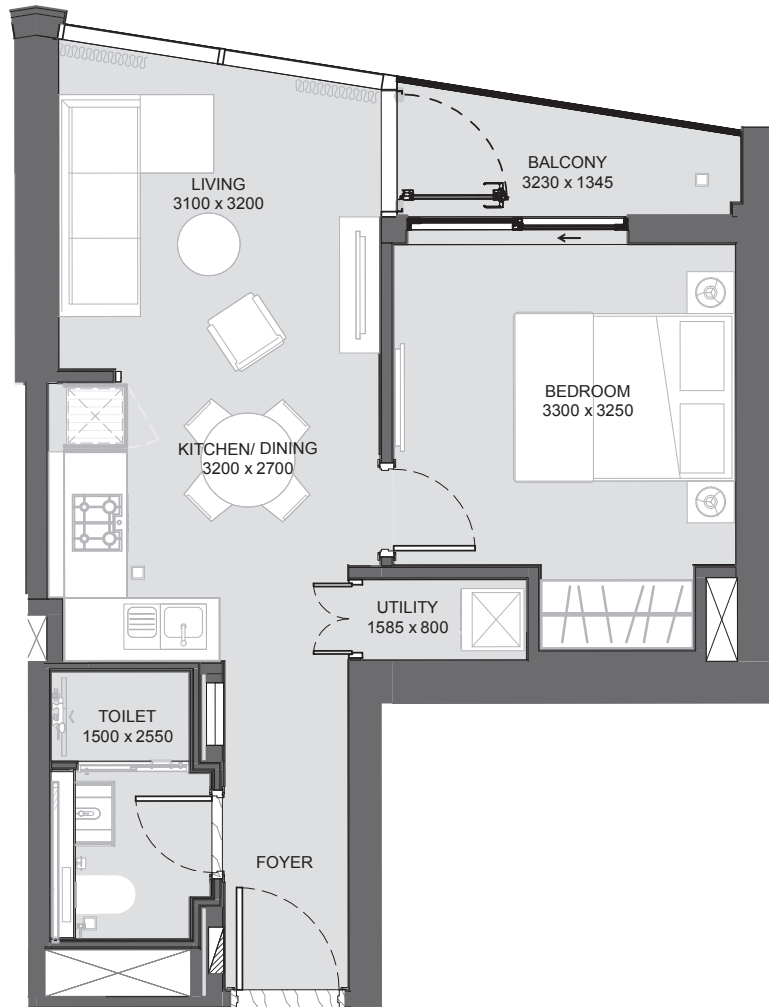
TYPE A (with balcony)

TOTAL SALEABLE AREA

SUITE = 43.21 SQ.M. / 465.11 SQ.FT TO 45.13 SQ.M. / 485.78 SQ.FT

BALCONY= 3.98 SQ.M. / 42.84 SQ.FT TO 4.02 SQ.M. / 43.27 SQ.FT.

TOTAL = 47.23 SQ.M. / 508.38 SQ.FT TO 49.12 SQ.M. / 528.72 SQ.FT.



Disclaimer: 1. All dimensions are in metric, measured to wall finishes. 2. All materials, dimensions & drawings are approximate. 3. Information is subject to change without notice, at developer's absolute discretion. 4. Actual area may vary from the stated area. 5. Drawing are not to scale. 6. All images used are for illustrative purpose only and do not represent the actual size, features, specifications, fittings and furnishings. 7. The developer reserves the right to make revisions/ alterations, at its absolute discretion, without any liability whatsoever.

1 BEDROOM APARTMENT

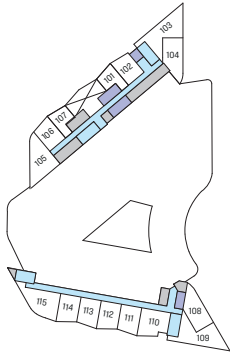
TYPE B (with balcony)

TOTAL SALEABLE AREA

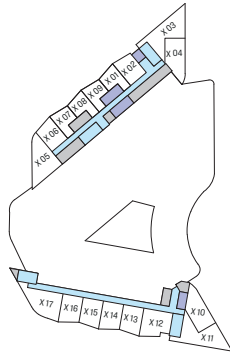
SUITE = 42.90 SQ.M. / 461.77 SQ.FT TO 43.81 SQ.M. / 471.57 SQ.FT

BALCONY = 4.02 SQ.M. / 43.27 SQ.FT

TOTAL = 46.92 SQ.M. / 505.04 SQ.FT TO 47.83 SQ.M. / 514.84 SQ.FT.



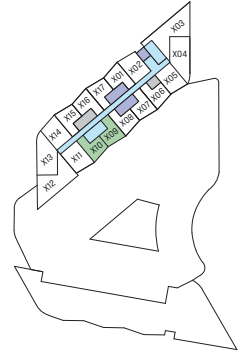
LEVEL 01



LEVEL 02-05



LEVEL 06

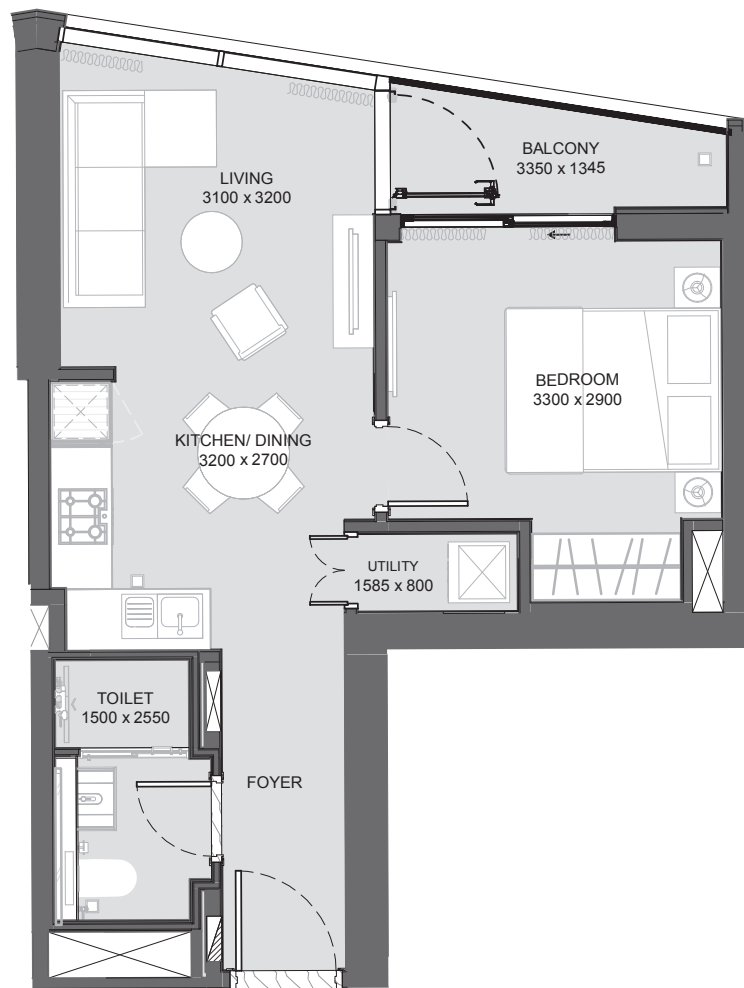


LEVEL 07-35



Waterfront

UNIT



Disclaimer: 1. All dimensions are in metric, measured to wall finishes. 2. All materials, dimensions & drawings are approximate. 3. Information is subject to change without notice, at developer's absolute discretion. 4. Actual area may vary from the stated area. 5. Drawing are not to scale. 6. All images used are for illustrative purpose only and do not represent the actual size, features, specifications, fittings and furnishings. 7. The developer reserves the right to make revisions/ alterations, at its absolute discretion, without any liability whatsoever.

1 BEDROOM + STUDY APARTMENT

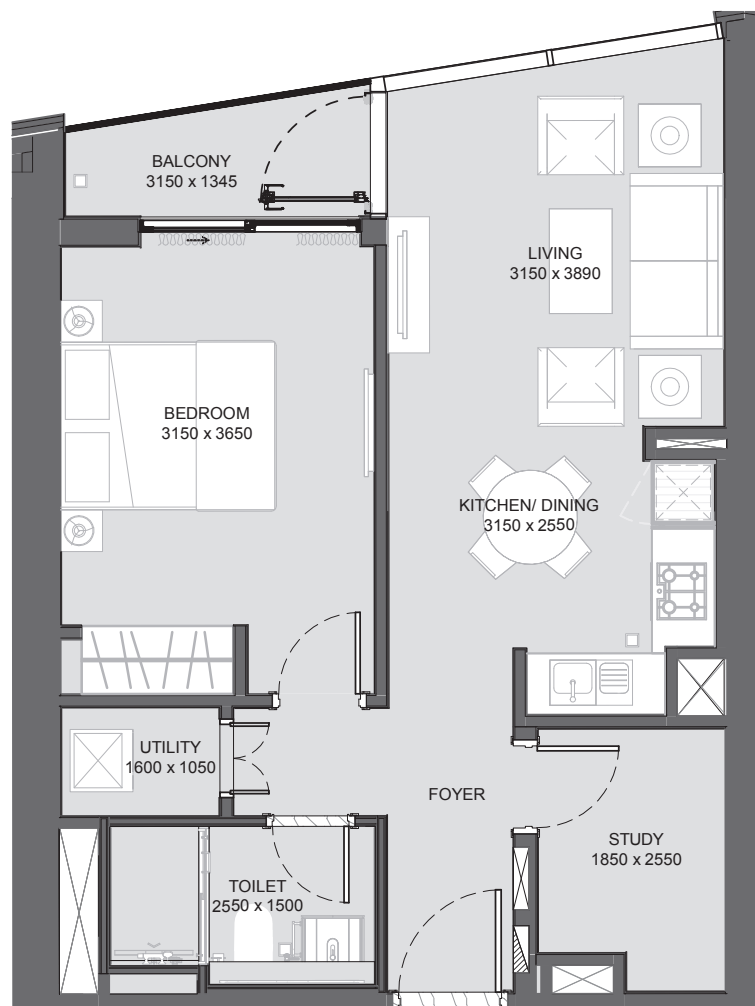
TYPE C1 (with balcony)

TOTAL SALEABLE AREA

SUITE = 52.19 SQ.M. / 561.77 SQ.FT TO 54.09 SQ.M. / 582.22 SQ.FT.

BALCONY= 3.76 SQ.M. / 40.47 SQ.FT TO 4.10 SQ. M. / 44.13 SQ. FT.

TOTAL = 56.10 SQ.M. / 603.86 SQ.FT TO 57.96 SQ.M. / 623.88 SQ.FT.



Disclaimer: 1. All dimensions are in metric, measured to wall finishes. 2. All materials, dimensions & drawings are approximate. 3. Information is subject to change without notice, at developer's absolute discretion. 4. Actual area may vary from the stated area. 5. Drawing are not to scale. 6. All images used are for illustrative purpose only and do not represent the actual size, features, specifications, fittings and furnishings. 7. The developer reserves the right to make revisions/ alterations, at its absolute discretion, without any liability whatsoever.

1 BEDROOM + STUDY APARTMENT

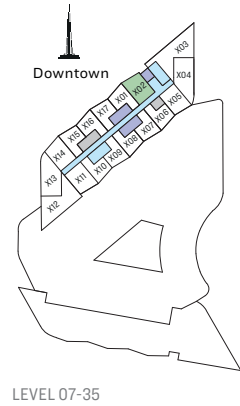
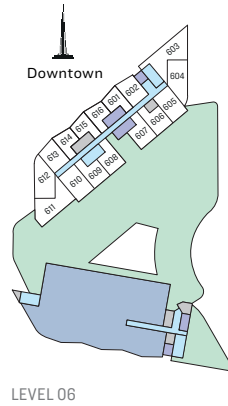
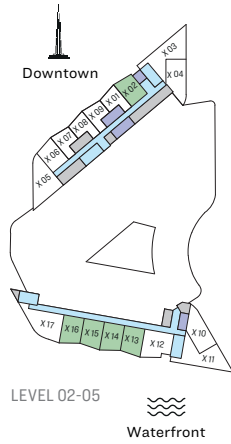
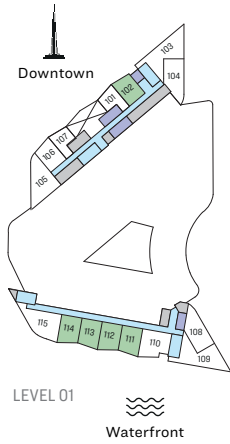
TYPE C2 (with balcony)

TOTAL SALEABLE AREA

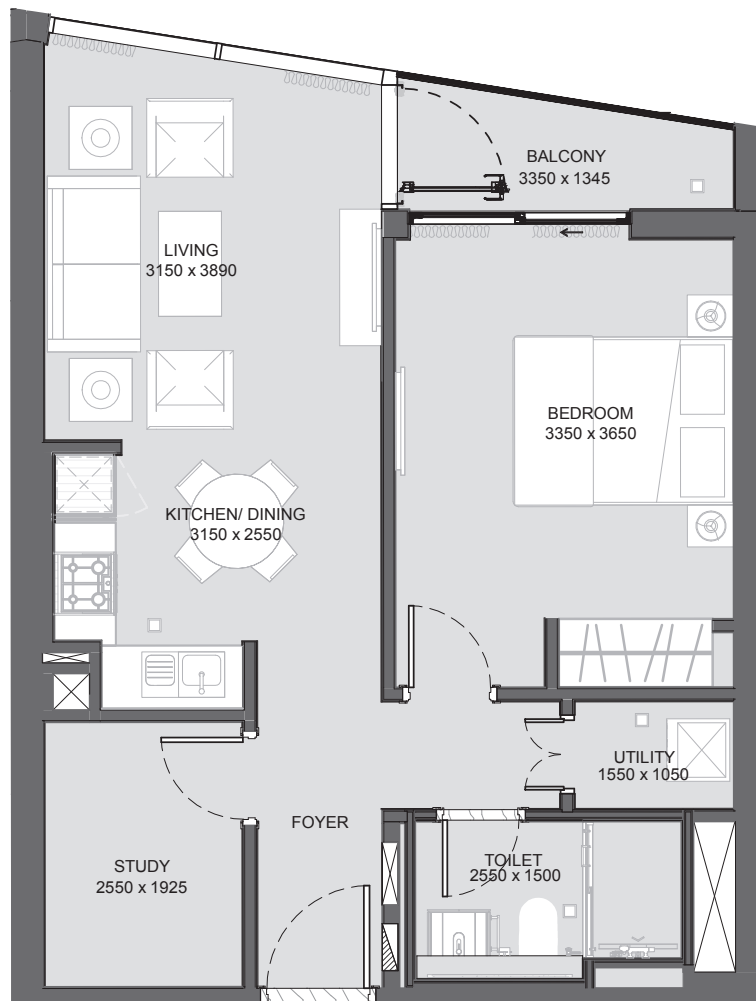
SUITE = 54.85 SQ.M. / 590.40 SQ.FT TO 55.61 SQ.M. / 598.58 SQ.FT.

BALCONY= 3.98 SQ.M. / 42.84 SQ.FT TO 4.23 SQ. M. / 45.53 SQ. FT.

TOTAL = 58.87 SQ.M. / 633.67 SQ.FT TO 59.77 SQ.M. / 643.36 SQ.FT.



UNIT



Disclaimer: 1. All dimensions are in metric, measured to wall finishes. 2. All materials, dimensions & drawings are approximate. 3. Information is subject to change without notice, at developer's absolute discretion. 4. Actual area may vary from the stated area. 5. Drawing are not to scale. 6. All images used are for illustrative purpose only and do not represent the actual size, features, specifications, fittings and furnishings. 7. The developer reserves the right to make revisions/ alterations, at its absolute discretion, without any liability whatsoever.

2 BEDROOM APARTMENT

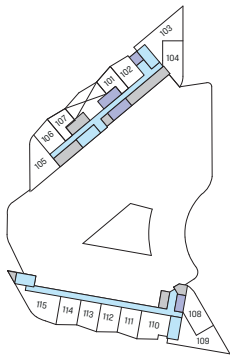
TYPE A1 (with balcony)

TOTAL SALEABLE AREA

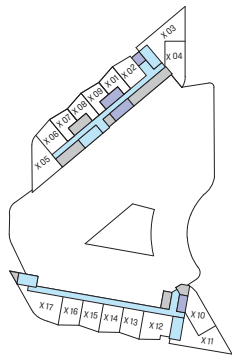
SUITE = 75.47 SQ.M. / 812.35 SQ.FT.

BALCONY = 3.76 SQ.M. / 40.47 SQ.FT.

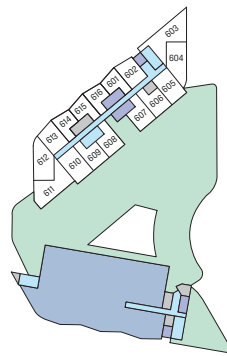
TOTAL = 79.23 SQ.M. / 852.82 SQ.FT.



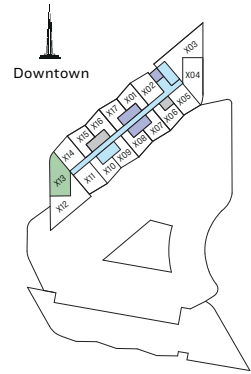
LEVEL 01



LEVEL 02-05



LEVEL 06



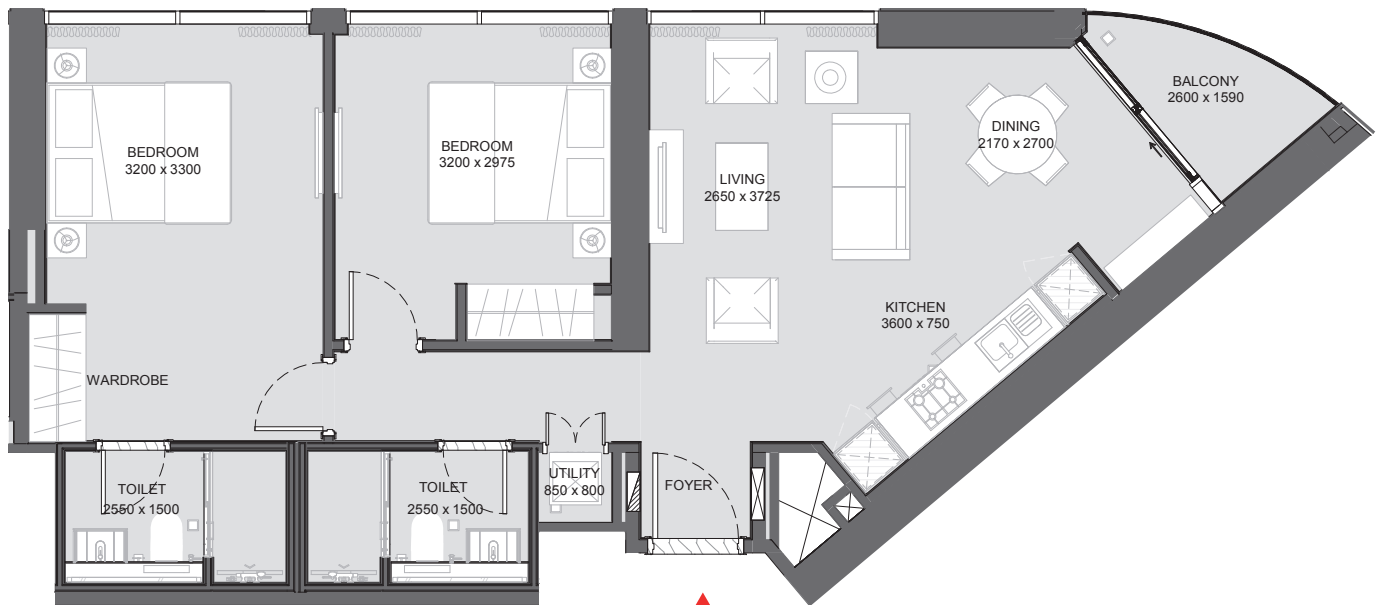
LEVEL 07-35



Waterfront



UNIT



2 BEDROOM APARTMENT

TYPE A2 (with balcony)

TOTAL SALEABLE AREA

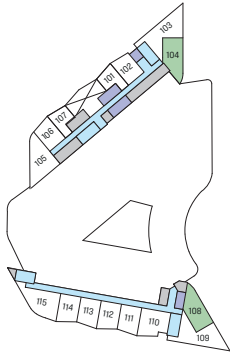
SUITE = 75.41 SQ.M. / 811.71 SQ.FT TO 76.96 SQ.M. / 828.39 SQ.FT.

BALCONY= 4.40 SQ.M. / 47.36 SQ.FT TO 5.60 SQ.M. / 60.28 SQ.FT.

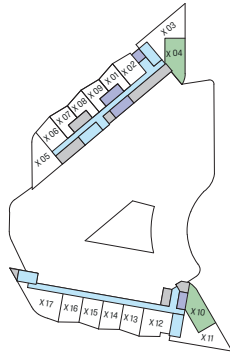
TOTAL = 79.81 SQ.M. / 859.07 SQ.FT TO 81.97 SQ.M. / 882.32 SQ.FT.



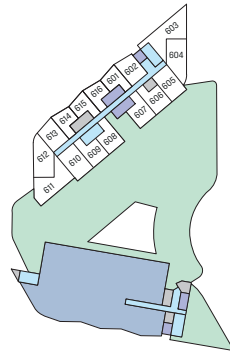
Ras Al Khor
Wildlife Sanctuary



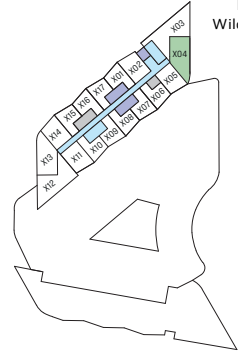
LEVEL 01



LEVEL 02-05



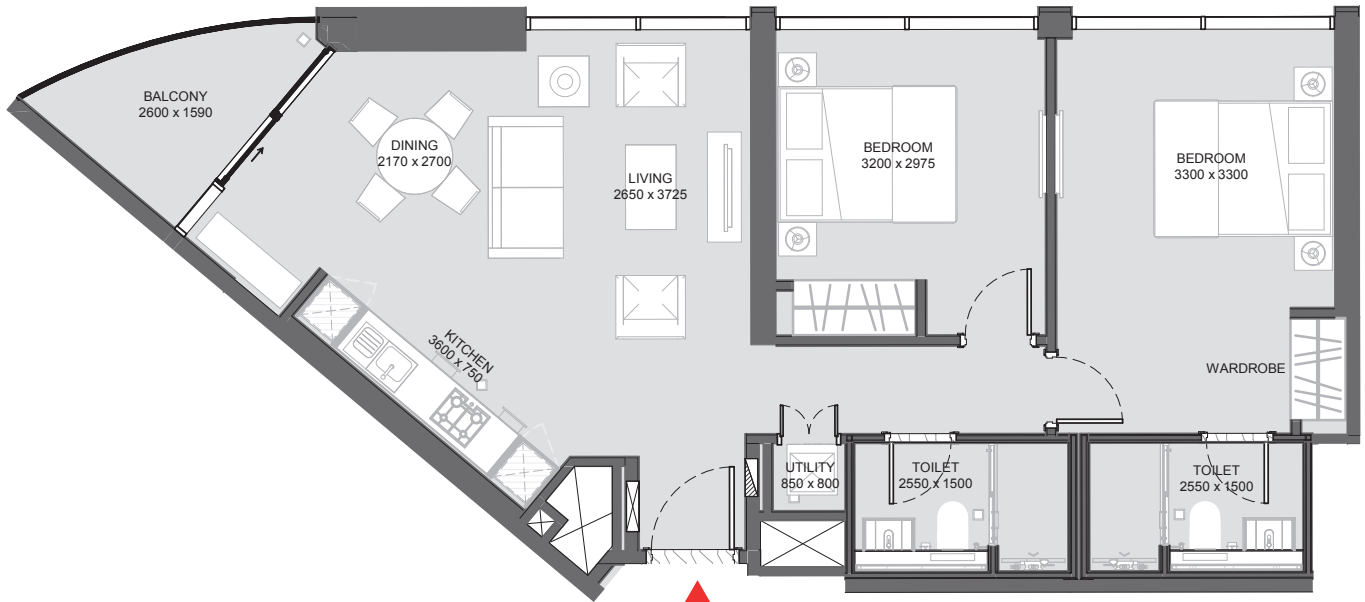
LEVEL 06



LEVEL 07-35



UNIT



Disclaimer: 1. All dimensions are in metric, measured to wall finishes. 2. All materials, dimensions & drawings are approximate. 3. Information is subject to change without notice, at developer's absolute discretion. 4. Actual area may vary from the stated area. 5. Drawing are not to scale. 6. All images used are for illustrative purpose only and do not represent the actual size, features, specifications, fittings and furnishings. 7. The developer reserves the right to make revisions/ alterations, at its absolute discretion, without any liability whatsoever.

2 BEDROOM APARTMENT

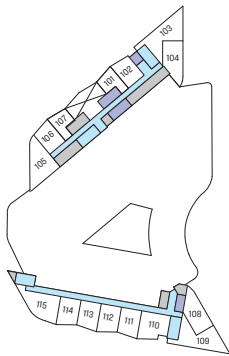
TYPE B1 (with balcony)

TOTAL SALEABLE AREA

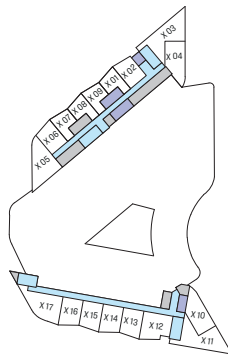
SUITE = 98.56 SQ.M. / 1,060.89 SQ.FT.

BALCONY = 5.66 SQ.M. / 60.92 SQ.FT.

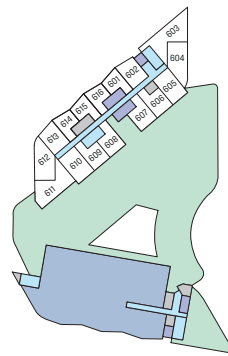
TOTAL = 104.22 SQ.M. / 1,121.81 SQ.FT.



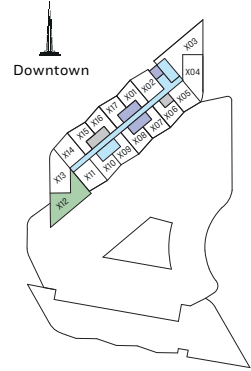
LEVEL 01



LEVEL 02-05



LEVEL 06



LEVEL 07-35

Waterfront

UNIT



2 BEDROOM APARTMENT

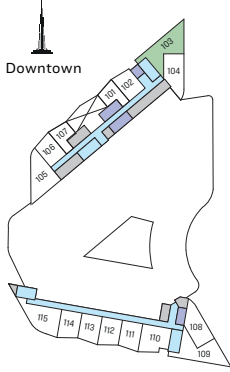
TYPE B2 (with balcony)

TOTAL SALEABLE AREA

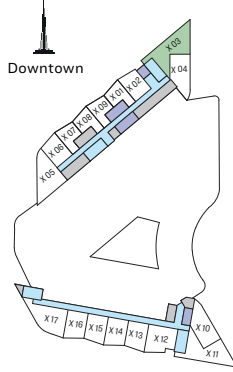
SUITE = 100.10 SQ.M. / 1,077.47 SQ.FT. TO 100.32 SQ.M. / 1,079.84 SQ.FT.

BALCONY = 11.87 SQ.M. / 127.77 SQ.FT. TO 11.92 SQ.M. / 128.31 SQ.FT.

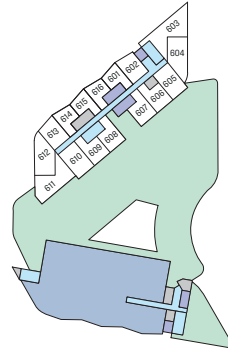
TOTAL = 111.99 SQ.M. / 1,205.45 SQ.FT. TO 112.24 SQ.M. / 1,208.14 SQ.FT.



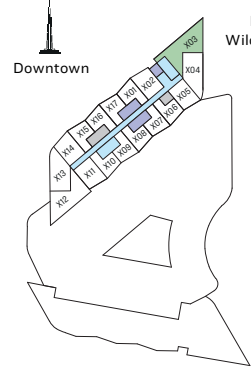
LEVEL 01



LEVEL 02-05



LEVEL 06



LEVEL 07-35



Waterfront



2 BEDROOM APARTMENT

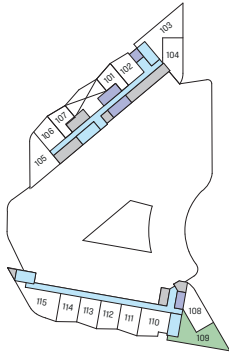
TYPE B3 (with balcony)

TOTAL SALEABLE AREA

SUITE = 97.55 SQ.MTR. / 1,050.02 SQ.FT.

BALCONY = 11.50 SQ.MTR. / 123.78 SQ.FT.

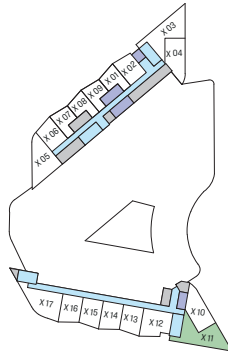
TOTAL = 109.05 SQ.MTR. / 1,173.80 SQ.FT.



LEVEL 01



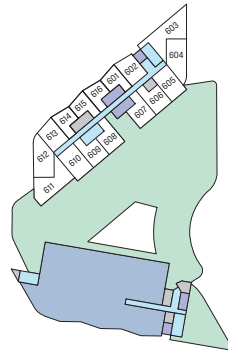
Waterfront



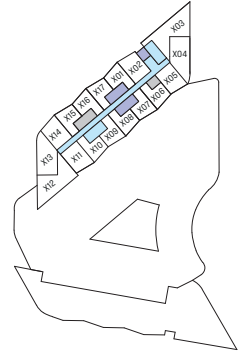
LEVEL 02-05



Waterfront



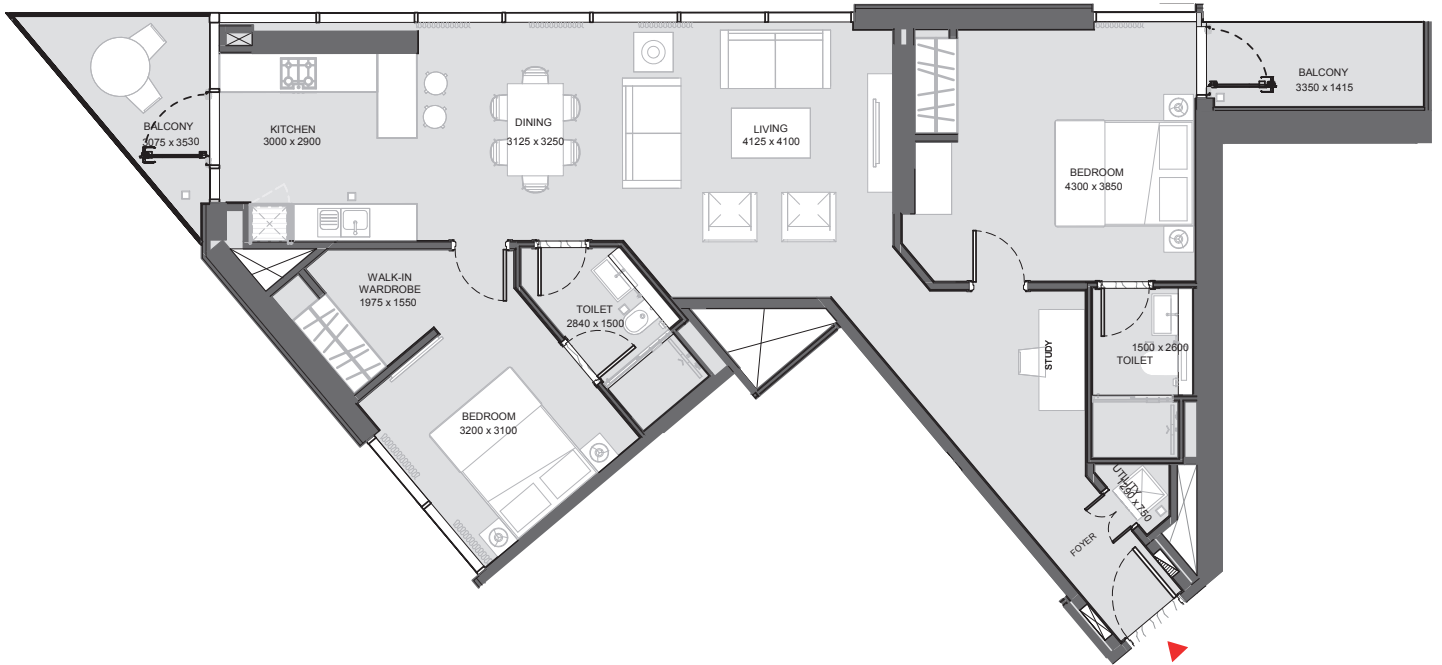
LEVEL 06



LEVEL 07-35



UNIT



2 BEDROOM APARTMENT

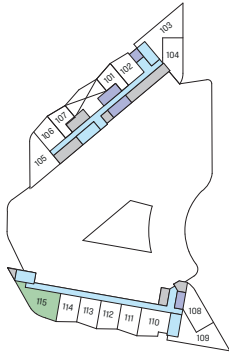
TYPE C (with balcony)

TOTAL SALEABLE AREA

SUITE = 86.19 SQ.MTR. / 927.74 SQ.FT. TO 86.22 SQ.M. / 928.06 SQ.FT.

BALCONY = 10.62 SQ.MTR. / 114.31 SQ.FT. TO 10.65 SQ.M. / 114.64 SQ.FT.

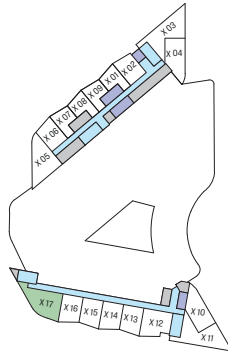
TOTAL = 96.84 SQ.MTR. / 1,042.38 SQ.FT.



LEVEL 01



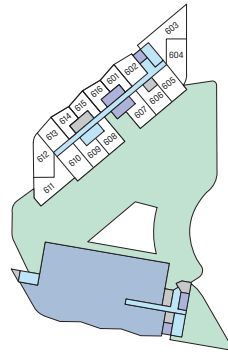
Waterfront



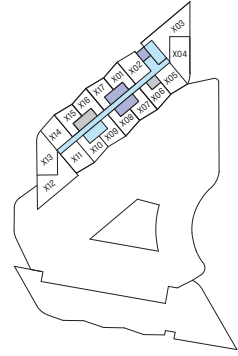
LEVEL 02-05



Waterfront

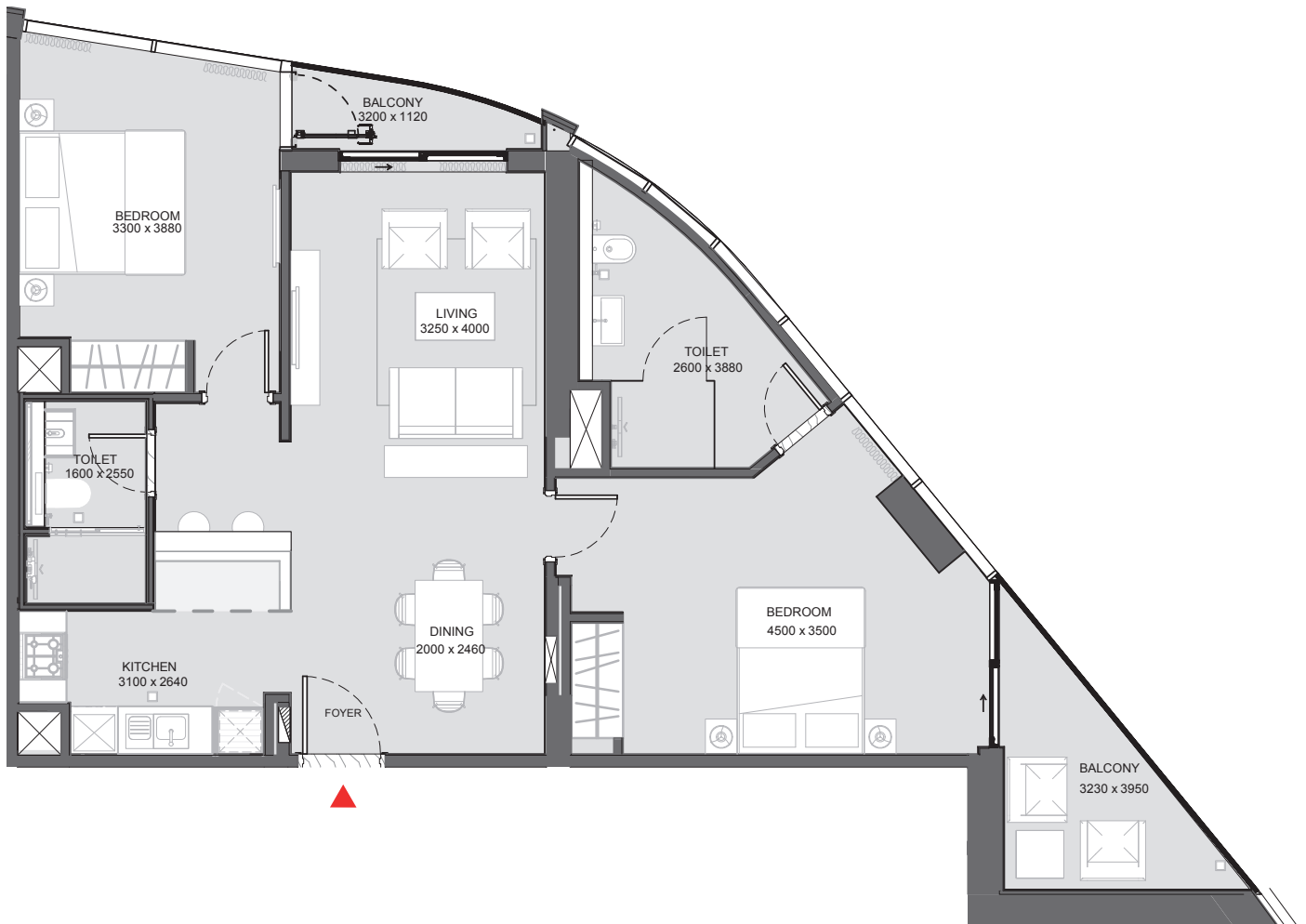


LEVEL 06



LEVEL 07-35

UNIT



Disclaimer: 1. All dimensions are in metric, measured to wall finishes. 2. All materials, dimensions & drawings are approximate. 3. Information is subject to change without notice, at developer's absolute discretion. 4. Actual area may vary from the stated area. 5. Drawing are not to scale. 6. All images used are for illustrative purpose only and do not represent the actual size, features, specifications, fittings and furnishings. 7. The developer reserves the right to make revisions/ alterations, at its absolute discretion, without any liability whatsoever.

2 BEDROOM APARTMENT

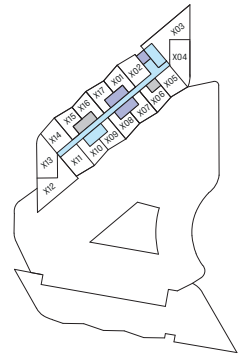
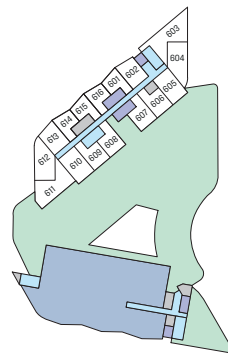
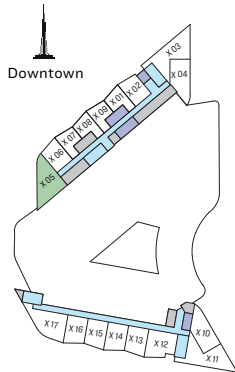
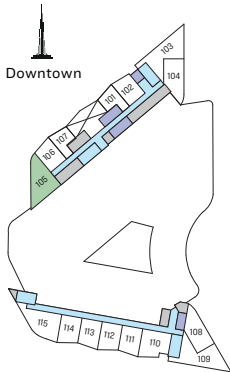
TYPE D (with balcony)

TOTAL SALEABLE AREA

SUITE = 89.83 SQ.M. / 966.92 SQ.FT. TO 89.99 SQ.M. / 968.64 SQ.FT.

BALCONY = 3.70 SQ.M. / 39.83 SQ.FT. TO 3.76 SQ.M. / 40.47 SQ.FT.

TOTAL = 93.53 SQ.M. / 1,006.75 SQ.FT. TO 93.75 SQ.M. / 1,009.12 SQ.FT.



UNIT



Disclaimer: 1. All dimensions are in metric, measured to wall finishes. 2. All materials, dimensions & drawings are approximate. 3. Information is subject to change without notice, at developer's absolute discretion. 4. Actual area may vary from the stated area. 5. Drawing are not to scale. 6. All images used are for illustrative purpose only and do not represent the actual size, features, specifications, fittings and furnishings. 7. The developer reserves the right to make revisions/ alterations, at its absolute discretion, without any liability whatsoever.

2 BEDROOM APARTMENT

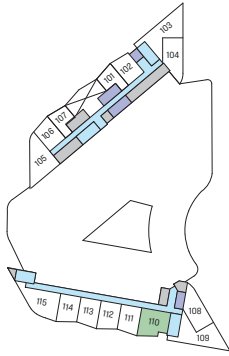
TYPE E (with balcony)

TOTAL SALEABLE AREA

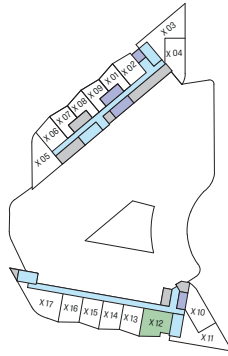
SUITE = 78.12 SQ.M. / 840.88 SQ.FT.

BALCONY = 3.97 SQ.M. / 42.73 SQ.FT.

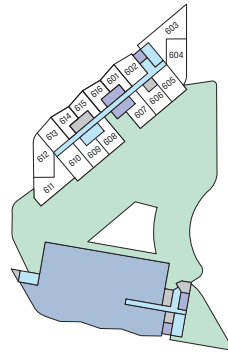
TOTAL = 82.09 SQ.M. / 883.61 SQ.FT.



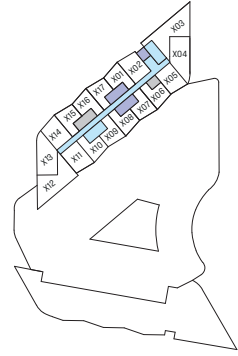
LEVEL 01



LEVEL 02-05

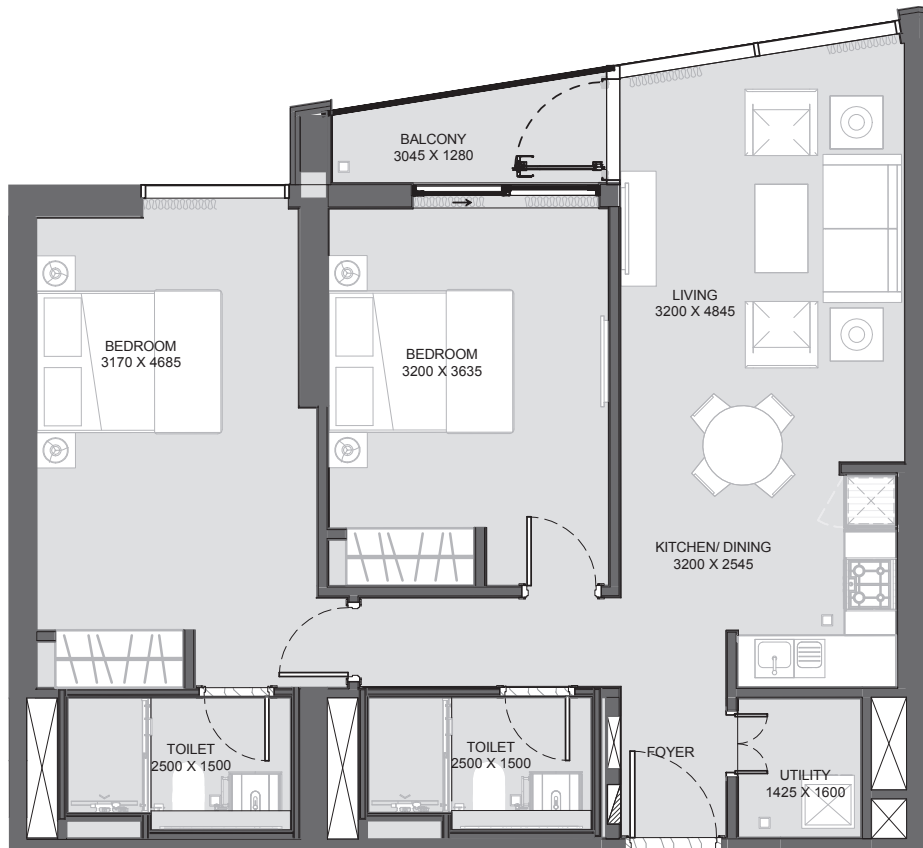


LEVEL 06



LEVEL 07-35

 UNIT



Disclaimer: 1. All dimensions are in metric, measured to wall finishes. 2. All materials, dimensions & drawings are approximate. 3. Information is subject to change without notice, at developer's absolute discretion. 4. Actual area may vary from the stated area. 5. Drawing are not to scale. 6. All images used are for illustrative purpose only and do not represent the actual size, features, specifications, fittings and furnishings. 7. The developer reserves the right to make revisions/ alterations, at its absolute discretion, without any liability whatsoever.